

SEM636D Wheel Loader



Installed with Cummins Engine

SEM636D

Product Advantages

- High Productivity
- Best-in-class Reliability and Durability
- Outstanding Operator Comfort

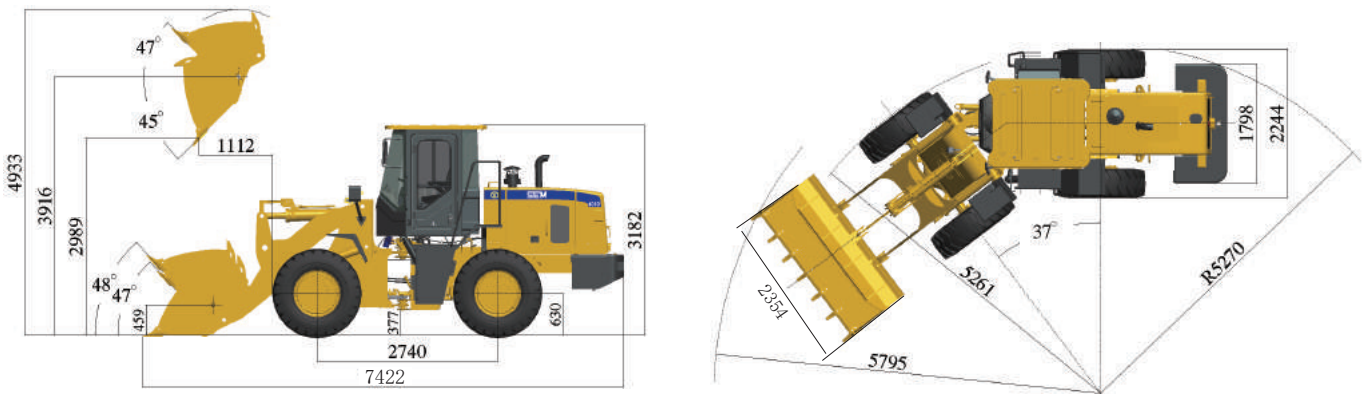
Website <http://www.semmachinery.com>

 **SEM**
A Caterpillar Brand

Main Specifications

Items		SEM636D		Items		SEM636D	
Main Specifications				Engine			
Rated Load	kg	3,000		Model		Cummins 6BT5.9	
Operating Weight with Standard Bucket	kg	10,047		Rated Power	kW	92	
Bucket Capacity	m ³	1.5-2.5		Rated Speed	r/min	2,200	
Wheel Base	mm	2,740		Displacement	L	6.754	
Overall Dimension	mm	7,422*2,354*3,182		Implement Hydraulic			
Operating Specifications				Implement System Type		Gear pump	
Breakout Force	KN	113		Boom Raise Time	s	4.65	
Dump Clearance	mm	2,989		Hydraulic Cycle Time	s	8.34	
Turn Angle	°	37±1		System Pressure Setting	Mpa	18	
Transmission				Brake System			
Transmission Type		Countershaft,power shift		Service Brake		Caliper dry discs , air over oil actuation	
Torque Converter Type		Single stage 3 elements		Parking Brake		"Drum type shoe brake, spring applied & oil released"	
Maker & Type		SEM TR100		Steering System			
Forward I/Reverse I	km/hr	7.9/9.7		System Type		Articulated load-sensing full hydraulic steering	
Forward II/Reverse II	km/hr	14/31		Steering PumpType		Gear pump	
Forward III	km/hr	25		System Pressure Setting	Mpa	14	
Forward IV	km/hr	39		Tires			
Axle				Size		17.5-25	
Main Drive Type		Spiral bevel gear,single stage		Type		Bias	
Final Drive Reduction Type		Planetary type,single stage		Layer		12	
Rear - Oscillating +/-	°	±12		Txtured Type		L-3	

Machine Dimensions



► Note: the above dimensions are based on the standard configuration.

Caterpillar (Qingzhou) Ltd. Address: No.12999 Nanhuan Road,Caterpillar Industrial Park, Qingzhou City,Shandong Province, Zip Code: 262500 P.R.China

© Materials and specifications are subject to change without notice. Featured machines in photos may include optional equipment. See your SEM dealer for available options.

© 2017 Caterpillar (Qingzhou) Ltd. All Rights Reserved. SEM Machinery, SEM, their respective logos, trade dress as well as corporate and product identity used herein, are trademarks of Caterpillar (Qingzhou) Ltd. and may not be used without permission.

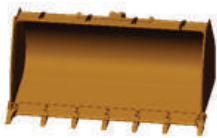
Version: November 2017 - Cummins II

Machine Applications

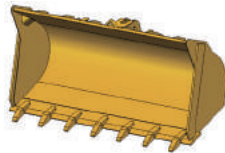
- SEM636D wheel loader delivers high efficiency and reliability. The 636D is suitable for most 3 ton size class applications including building construction, ports and quarries.



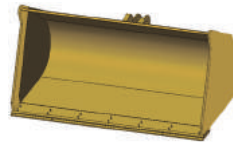
Work Tool Options



Standard bucket 1.7m³



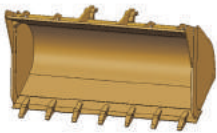
Bucket 1.5m³



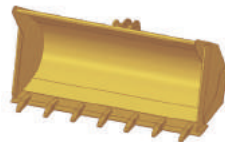
Bucket 2.5m³



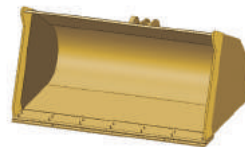
QC coal bucket



QC standard bucket 1.7m³



Sand bucket 1.5m³



Coal bucket 2.5m³



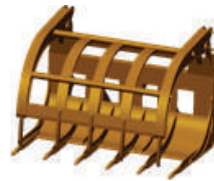
Standard bucket BOCE1.5m³



Bigger capacity log fork



Strengthen log fork



Hay fork



QC strengthen log fork



QC hay fork



Pallet fork



Log gripper

Serviceability

- Hydraulic and brake system pressure test points make more easier to know machine running status
- Large, easy to open hood side door makes access easier
- Torque convertor is isolated from transmission making it easy to service



Safety

- Full hydraulic priority steering and joystick make operation easy and comfortable
- Caterpillar Production System (CPS) leverages in manufacturing process
- Single pump flow shared implement hydraulic system delivers low fuel consumption and high efficiency
- Short cycle time makes material handling faster



Reliable Drivetrain

- Countershaft transmission with upgraded core components provides higher reliability and service life
- 100 KN rim-pull in 1st gear and 14 km/hr in 2nd gear provide high efficiency for load and carry applications
- Power cut off switch provides better protection of the axle and transmission
- Single stage, 3 element provides higher efficiency



Advanced Cooling System

- 43 degree standard cool package suitable for most applications
- 50 degree high ambient cooling package optional for hot region
- High debris cooling package for really heavy dust work environment



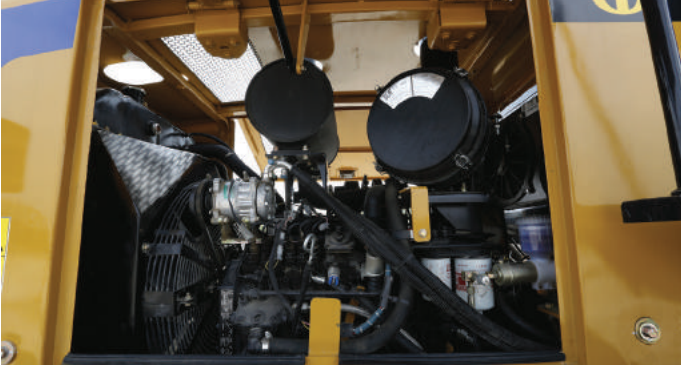
Solid Structure

- All frames are undergoing Finite Element Analysis (FEA) and On Machine Stress Analysis which makes them sturdy
- Performance bucket (PS) delivers high load factor and fewer fuel consumption



Cummins Engine

- Easy engine access, convenient placement of key parts and fluid refill points
- Low fuel consumption engine with high productivity
- Forged steel camshaft and optimized cylinder liners delivers greater reliability



Hydraulic System

- Full hydraulic priority steering and Joystick make operation easy and comfortable
- Single pump flow shared implement hydraulic system delivers low fuel consumption and high efficiency
- Short cycle times help move more material faster



Operator Station

- Fully adjustable seat with seat belt. This seat has 3 position adjustment for increased operator comfort
- All controls and instruments are ergonomically designed for increased comfort and all round visibility
- Patented cab mount design provides a quieter and more comfortable operator experience

